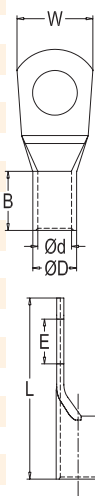
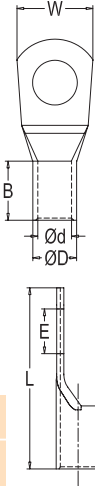


RCCN 日成SC铜管端子 SC Copper Tube Terminals



型号 Item No.	尺寸 DIMENSION					
	E	D ϕ	d ϕ	W	B	L
SC35-10	10.5	10.6	8.2	18.0	14.0	39.0
SC35-12	13.0	10.6	8.2	19.0	14.0	40.5
SC35-14	15.0	10.6	8.2	20.0	14.0	42.0
SC50-6	6.5	12.4	9.5	17.8	16.0	45.0
SC50-8	8.4	12.4	9.5	17.8	16.0	45.0
SC50-10	10.5	12.4	9.5	17.8	16.0	45.0
SC50-12	13.0	12.4	9.5	20.0	16.0	45.0
SC50-14	15.0	12.4	9.5	22.0	16.0	46.0
SC50-16	17.0	12.4	9.5	24.0	16.0	47.0
SC70-8	8.4	14.7	11.2	21.0	20.0	52.0
SC70-10	10.5	14.7	11.2	21.0	20.0	52.0
SC70-12	13.0	14.7	11.2	21.0	20.0	52.0
SC70-14	15.0	14.7	11.2	21.0	20.0	52.0
SC70-16	17.0	14.7	11.2	25.0	20.0	53.0
SC95-8	8.4	17.4	13.5	25.0	23.0	58.0
SC95-10	10.5	17.4	13.5	25.0	23.0	58.0
SC95-12	13.0	17.4	13.5	25.0	23.0	58.0
SC95-14	15.0	17.4	13.5	25.0	23.0	58.0
SC95-16	17.0	17.4	13.5	25.0	23.0	58.0
SC120-8	8.4	19.4	15.0	28.0	22.0	63.0
SC120-10	10.5	19.4	15.0	28.0	22.0	63.0
SC120-12	13.0	19.4	15.0	28.0	22.0	63.0
SC120-14	15.0	19.4	15.0	28.0	22.0	63.0
SC120-16	17.0	19.4	15.0	28.0	22.0	63.0
SC120-20	21.0	19.4	15.0	28.0	22.0	63.0
SC150-8	8.4	21.2	16.5	30.5	26.0	70.0
SC150-10	10.5	21.2	16.5	30.5	26.0	70.0
SC150-12	13.0	21.2	16.5	30.5	26.0	70.0
SC150-14	15.0	21.2	16.5	30.5	26.0	70.0
SC150-16	17.0	21.2	16.5	30.5	26.0	70.0
SC150-20	21.0	21.2	16.5	30.5	26.0	70.0
SC185-10	10.5	23.5	18.5	34.0	32.0	75.0
SC185-12	13.0	23.5	18.5	34.0	32.0	75.0
SC185-14	15.0	23.5	18.5	34.0	32.0	75.0
SC185-16	17.0	23.5	18.5	34.0	32.0	75.0
SC185-20	21.0	23.5	18.5	34.0	32.0	75.0
SC240-10	10.5	26.5	21.0	38.5	38.0	90.0
SC240-12	13.0	26.5	21.0	38.5	38.0	90.0
SC240-14	15.0	26.5	21.0	38.5	38.0	90.0
SC240-16	17.0	26.5	21.0	38.5	38.0	90.0
SC240-18	19.0	26.5	21.0	38.5	38.0	90.0
SC240-20	21.0	26.5	21.0	38.5	38.0	90.0
SC300-10	10.5	30.0	23.5	43.0	42.0	98.0
SC300-12	13.0	30.0	23.5	43.0	42.0	98.0
SC300-14	15.0	30.0	23.5	43.0	42.0	98.0
SC300-16	17.0	30.0	23.5	43.0	42.0	98.0
SC300-20	21.0	30.0	23.5	43.0	42.0	98.0
SC400-10	10.5	36.5	28.5	52.0	44.0	110.0
SC400-12	13.0	36.5	28.5	52.0	44.0	110.0
SC400-14	15.0	36.5	28.5	52.0	44.0	110.0
SC400-16	17.0	36.5	28.5	52.0	44.0	110.0
SC400-20	21.0	36.5	28.5	52.0	44.0	110.0
SC500-10	10.5	39.0	30.0	56.0	48.0	120.0
SC500-12	13.0	39.0	30.0	56.0	48.0	120.0
SC500-14	15.0	39.0	30.0	56.0	48.0	120.0
SC500-16	17.0	39.0	30.0	56.0	48.0	120.0
SC500-20	21.0	39.0	30.0	56.0	48.0	120.0
SC630-10	10.5	45.0	35.0	65.0	56.0	140.0
SC630-12	13.0	45.0	35.0	65.0	56.0	140.0
SC630-14	15.0	45.0	35.0	65.0	56.0	140.0
SC630-16	17.0	45.0	35.0	65.0	56.0	140.0
SC630-20	21.0	45.0	35.0	65.0	56.0	140.0

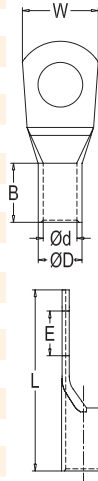
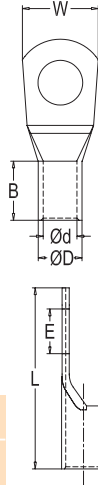
型号 Item No.	尺寸 DIMENSION					
	E	D ϕ	d ϕ	W	B	L
SC1.5-3	3.2	3.7	1.8	8.0	5.0	16.0
SC1.5-4	4.2	3.7	1.8	8.0	5.0	16.0
SC1.5-5	5.2	3.7	1.8	10.0	5.0	17.0
SC1.5-6	6.5	3.7	1.8	10.0	5.0	18.0
SC2.5-4	4.2	4.0	2.4	8.0	7.0	18.0
SC2.5-5	5.2	4.0	2.4	10.0	7.0	20.0
SC2.5-6	6.5	4.0	2.4	10.0	7.0	20.0
SC2.5-8	8.4	4.0	2.4	12.5	7.0	23.0
SC4-4	4.2	4.8	3.1	10.0	7.0	20.0
SC4-5	5.2	4.8	3.1	10.0	7.0	20.0
SC4-6	6.5	4.8	3.1	10.0	7.0	20.0
SC4-8	8.4	4.8	3.1	12.5	7.0	23.0
SC6-4	4.2	5.5	3.8	10.0	9.0	24.0
SC6-5	5.2	5.5	3.8	10.0	9.0	24.0
SC6-6	6.5	5.5	3.8	12.0	9.0	24.0
SC6-8	8.4	5.5	3.8	12.5	9.0	26.0
SC6-10	10.5	6.2	4.0	15.0	9.0	28.0
SC10-5	5.2	6.2	4.5	12.0	9.0	25.0
SC10-6	6.5	6.2	4.5	12.0	9.0	25.0
SC10-8	8.4	6.2	4.5	12.5	9.0	27.0
SC10-10	10.5	6.2	4.5	15.0	9.0	29.0
SC10-12	13.0	6.2	4.5	17.0	9.0	31.0
SC16-5	5.2	7.1	5.4	12.0	12.0	30.0
SC16-6	6.5	7.1	5.4	12.0	12.0	30.0
SC16-8	8.4	7.1	5.4	12.5	12.0	30.0
SC16-10	10.5	7.1	5.4	16.0	12.0	33.0
SC16-12	13.0	7.1	5.4	17.0	12.0	35.0
SC25-5	5.2	8.8	6.8	13.0	12.0	33.0
SC25-6	6.5	8.8	6.8	13.0	12.0	33.0
SC25-8	8.4	8.8	6.8	15.0	12.0	33.0
SC25-10	10.5	8.8	6.8	18.0	12.0	34.0
SC25-12	13.0	8.8	6.8	18.0	12.0	35.0
SC25-14	15.0	8.8	6.8	20.0	12.0	38.0
SC35-5	5.2	10.6	8.2	16.0	14.0	38.0
SC35-6	6.5	10.6	8.2	16.0	14.0	38.0
SC35-8	8.4	10.6	8.2	16.0	14.0	38.0



RCCN 日成ASC铜管端子 ASC Copper Tube Terminals

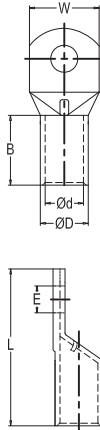


型号 Item No.	尺寸 DIMENSION					
	E	D ϕ	d ϕ	W	B	L
ASC1.5-4	4.2	3.6	1.8	8.0	5.0	16
ASC1.5-5	5.2	3.6	1.8	10.0	5.0	17
ASC1.5-6	6.5	3.6	1.8	10.0	5.0	18
ASC2.5-4	4.2	3.9	2.4	8.0	7.0	18
ASC2.5-5	5.2	3.9	2.4	10.0	7.0	20
ASC2.5-6	6.5	3.9	2.4	10.0	7.0	20
ASC2.5-8	8.4	3.9	2.4	12.5	7.0	23
ASC4-4	4.2	4.7	3.1	10.0	7.0	20
ASC4-5	5.2	4.7	3.1	10.0	7.0	20
ASC4-6	6.5	4.7	3.1	10.0	7.0	20
ASC4-8	8.4	4.7	3.1	12.5	7.0	23
ASC6-4	4.2	5.4	3.8	10.0	9.0	24
ASC6-5	5.2	5.4	3.8	10.0	9.0	24
ASC6-6	6.5	5.4	3.8	12.0	9.0	24
ASC6-8	8.4	5.4	3.8	12.5	9.0	26
ASC6-10	10.5	6.0	4.0	15.0	9.0	28
ASC10-5	5.2	6.1	4.5	12.0	9.0	25
ASC10-6	6.5	6.1	4.5	12.0	9.0	25
ASC10-8	8.4	6.1	4.5	12.5	9.0	27
ASC10-10	10.5	6.1	4.5	15.0	9.0	29
ASC10-12	13	6.1	4.5	17.0	9.0	31
ASC16-5	5.2	7.0	5.4	12.0	12.0	30
ASC16-6	6.5	7.0	5.4	12.0	12.0	30
ASC16-8	8.4	7.0	5.4	12.5	12.0	30
ASC16-10	10.5	7.0	5.4	16.0	12.0	33
ASC16-12	13	7.0	5.4	17.0	12.0	35
ASC25-5	5.2	8.6	6.8	13.0	12.0	33
ASC25-6	6.5	8.6	6.8	13.0	12.0	33
ASC25-8	8.4	8.6	6.8	15.0	12.0	33
ASC25-10	10.5	8.6	6.8	18.0	12.0	34
ASC25-12	13	8.6	6.8	18.0	12.0	35
ASC25-14	15	8.6	6.8	20.0	12.0	38
ASC35-5	5.2	10.4	8.2	16.0	14.0	38
ASC35-6	6.5	10.4	8.2	16.0	14.0	38
ASC35-8	8.4	10.4	8.2	16.0	14.0	38
ASC35-10	10.5	10.4	8.2	18.0	14.0	39



型号 Item No.	尺寸 DIMENSION					
	E	D ϕ	d ϕ	W	B	L
ASC35-12	13	10.4	8.2	19.0	14.0	40.5
ASC35-14	15	10.4	8.2	20.0	14.0	42
ASC50-6	6.5	12.2	9.5	17.8	16.0	45
ASC50-8	8.4	12.2	9.5	17.8	16.0	45
ASC50-10	10.5	12.2	9.5	17.8	16.0	45
ASC50-12	13	12.2	9.5	20.0	16.0	45
ASC50-14	15	12.2	9.5	22.0	16.0	46
ASC50-16	17	12.2	9.5	24.0	16.0	47
ASC70-8	8.4	14.4	11.2	21.0	20.0	52
ASC70-10	10.5	14.4	11.2	21.0	20.0	52
ASC70-12	13	14.4	11.2	21.0	20.0	52
ASC70-14	15	14.4	11.2	21.0	20.0	52
ASC70-16	17	14.4	11.2	25.0	20.0	53
ASC95-8	8.4	17.1	13.5	25.0	23.0	58
ASC95-10	10.5	17.1	13.5	25.0	23.0	58
ASC95-12	13	17.1	13.5	25.0	23.0	58
ASC95-14	15	17.1	13.5	25.0	23.0	58
ASC95-16	17	17.1	13.5	25.0	23.0	58
ASC120-8	8.4	19.0	15	27.5	22.0	63
ASC120-10	10.5	19.0	15	27.5	22.0	63
ASC120-12	13	19.0	15	27.5	22.0	63
ASC120-14	15	19.0	15	27.5	22.0	63
ASC120-16	17	19.0	15	27.5	22.0	63
ASC120-20	21	19.0	15	27.5	22.0	63
ASC150-8	8.4	20.8	16.5	30.0	26.0	70
ASC150-10	10.5	20.8	16.5	30.0	26.0	70
ASC150-12	13	20.8	16.5	30.0	26.0	70
ASC150-14	15	20.8	16.5	30.0	26.0	70
ASC150-16	17	20.8	16.5	30.0	26.0	70
ASC150-20	21	20.8	16.5	30.0	26.0	70
ASC185-10	10.5	23.1	18.5	33.5	32.0	75
ASC185-12	13	23.1	18.5	33.5	32.0	75
ASC185-14	15	23.1	18.5	33.5	32.0	75
ASC185-16	17	23.1	18.5	33.5	32.0	75
ASC185-20	21	23.1	18.5	33.5	32.0	75
ASC240-10	10.5	26.0	21.0	38.0	38.0	90
ASC240-12	13	26.0	21.0	38.0	38.0	90
ASC240-14	15	26.0	21.0	38.0	38.0	90
ASC240-16	17	26.0	21.0	38.0	38.0	90
ASC240-18	19	26.0	21.0	38.0	38.0	90
ASC240-20	21	26.0	21.0	38.0	38.0	90
ASC300-10	10.5	29.4	23.5	43.0	42.0	98
ASC300-12	13	29.4	23.5	43.0	42.0	98
ASC300-14	15	29.4	23.5	43.0	42.0	98
ASC300-16	17	29.4	23.5	43.0	42.0	98
ASC300-20	21	29.4	23.5	43.0	42.0	98
ASC400-10	10.5	35.8	28.5	52.0	44.0	110
ASC400-12	13	35.8	28.5	52.0	44.0	110
ASC400-14	15	35.8	28.5	52.0	44.0	110
ASC400-16	17	35.8	28.5	52.0	44.0	110
ASC400-20	21	35.8	28.5	52.0	44.0	110
ASC500-10	10.5	38.2	30.0	55.0	48.0	120
ASC500-12	13	38.2	30.0	55.0	48.0	120
ASC500-14	15	38.2	30.0	55.0	48.0	120
ASC500-16	17	38.2	30.0	55.0	48.0	120
ASC500-20	21	38.2	30.0	55.0	48.0	120
ASC630-10	10.5	44.1	35.0	63.5	56.0	140
ASC630-12	13	44.1	35.0	63.5	56.0	140
ASC630-14	15	44.1	35.0	63.5	56.0	140
ASC630-16	17	44.1	35.0	63.5	56.0	140
ASC630-20	21	44.1	35.0	63.5	56.0	140

RCCN 日成HUP铜管端子 HUP Copper Tube Terminals



型号 Item No.	尺寸 DIMENSION					
	E	Dφ	dφ	W	B	L
HUP1.5-3	3.2	3.3	1.8	6.5	6.0	15.3
HUP1.5-4	4.3	3.3	1.8	6.5	6.0	17.0
HUP1.5-6	6.5	3.3	1.8	9.0	6.0	22.5
HUP2.5-3	3.2	4.2	2.3	7.5	6.0	15.3
HUP2.5-4	4.3	4.2	2.3	7.5	6.0	17.0
HUP2.5-5	5.3	4.2	2.3	8.5	6.0	18.8
HUP2.5-6	6.5	4.2	2.3	9.5	6.0	22.5
HUP2.5-8	8.5	4.2	2.3	13	6.0	27.8
HUP4-5	5.3	5.0	3.0	9.0	8.0	21.8
HUP4-6	6.5	5.0	3.0	10.0	8.0	25.5
HUP4-8	8.5	5.0	3.0	13.0	8.0	30.5
HUP6-5	5.3	6.5	3.5	10.0	9.0	27.5
HUP6-6	6.5	6.5	3.5	12.0	9.0	27.5
HUP6-8	8.5	6.5	3.5	15.0	9.0	33.0
HUP6-10	10.5	6.5	3.5	17.0	9.0	37.0
HUP6-12	13.0	6.5	3.5	19.0	9.0	41.0
HUP10-5	5.3	7.0	4.5	12.0	10.0	28.5
HUP10-6	6.5	7.0	4.5	12.0	10.0	28.5
HUP10-8	8.5	7.0	4.5	15.0	10.0	35.0
HUP10-10	10.5	7.0	4.5	17.0	10.0	39.0
HUP10-12	13.0	7.0	4.5	19.0	10.0	42.0
HUP16-5	5.3	8.5	5.5	12.0	13.0	32.5
HUP16-6	6.5	8.5	5.5	12.0	13.0	33.3
HUP16-8	8.5	8.5	5.5	15.0	13.0	37.5
HUP16-10	10.5	8.5	5.5	17.0	13.0	41.5
HUP16-12	13.0	8.5	5.5	19.0	13.0	45.0
HUP16-14	15.0	8.5	5.5	21.0	13.0	45.0
HUP25-5	5.3	10.0	7.0	14.0	15.0	37.5
HUP25-6	6.5	10.0	7.0	14.0	15.0	37.5
HUP25-8	8.5	10.0	7.0	16.0	15.0	42.0
HUP25-10	10.5	10.0	7.0	18.0	15.0	46.0
HUP25-12	13.0	10.0	7.0	19.0	15.0	48.0
HUP25-14	15.0	10.0	7.0	21.0	15.0	52.5
HUP35-6	6.5	12.0	8.5	17.0	17.0	39.5

型号 Item No.	尺寸 DIMENSION					
	E	Dφ	dφ	W	B	L
HUP35-8	8.5	12.0	8.5	17.0	17.0	44.0
HUP35-10	10.5	12.0	8.5	19.0	17.0	49.0
HUP35-12	13.0	12.0	8.5	21.0	17.0	51.0
HUP35-14	15.0	12.0	8.5	21.0	17.0	54.5
HUP35-16	17.0	12.0	8.5	26.0	17.0	58.0
HUP50-6	6.5	14.0	10.0	20.0	19.0	47.0
HUP50-8	8.5	14.0	10.0	20.0	19.0	47.0
HUP50-10	10.5	14.0	10.0	20.0	19.0	51.0
HUP50-12	13.0	14.0	10.0	23.0	19.0	56.0
HUP50-14	15.0	14.0	10.0	23.0	19.0	59.5
HUP50-16	17.0	14.0	10.0	28.0	19.0	62.0
HUP50-20	21.0	14.0	10.0	30.0	19.0	67.0
HUP70-6	6.5	16.5	12.0	23.5	21.0	53.0
HUP70-8	8.5	16.5	12.0	23.5	21.0	53.0
HUP70-10	10.5	16.5	12.0	23.5	21.0	56.0
HUP70-12	13.0	16.5	12.0	23.5	21.0	59.0
HUP70-14	15.0	16.5	12.0	23.5	21.0	62.5
HUP70-16	17.0	16.5	12.0	28.0	21.0	66.0
HUP70-20	21.0	16.5	12.0	30.0	21.0	72.0
HUP95-8	8.5	18.0	13.5	26.0	25.0	60.0
HUP95-10	10.5	18.0	13.5	26.0	25.0	60.0
HUP95-12	13.0	18.0	13.5	26.0	25.0	62.0
HUP95-14	15.0	18.0	13.5	26.0	25.0	65.5
HUP95-16	17.0	18.0	13.5	28.0	25.0	70.0
HUP95-20	21.0	18.0	13.5	36.0	26.0	82.0
HUP120-8	8.5	19.5	15.0	28.0	26.0	65.0
HUP120-10	10.5	19.5	15.0	28.0	26.0	65.0
HUP120-12	13.0	19.5	15.0	28.0	26.0	65.0
HUP120-14	15.0	19.5	15.0	28.0	26.0	67.0
HUP120-16	17.0	19.5	15.0	30.0	26.0	70.0
HUP120-20	21.0	19.5	15.0	36.0	28.0	85.0
HUP150-8	8.5	21.0	16.5	30.5	30.0	70.0
HUP150-10	10.5	21.0	16.5	30.5	30.0	72.0
HUP150-12	13.0	21.0	16.5	30.5	30.0	72.0
HUP150-14	15.0	21.0	16.5	30.5	30.0	72.0
HUP150-16	17.0	21.0	16.5	30.5	30.0	74.0
HUP150-20	21.0	21.0	16.5	36.0	30.0	88.0
HUP185-10	10.5	24.0	19.0	35.0	30.0	83.0
HUP185-12	13.0	24.0	19.0	35.0	30.0	83.0
HUP185-14	15.0	24.0	19.0	35.0	30.0	83.0
HUP185-16	17.0	24.0	19.0	35.0	30.0	83.0
HUP185-20	21.0	24.0	19.0	39.0	30.0	91.0
HUP240-10	10.5	26.0	21.0	38.0	35.0	93.5
HUP240-12	13.0	26.0	21.0	38.0	35.0	93.5
HUP240-14	15.0	26.0	21.0	38.0	35.0	93.5
HUP240-16	17.0	26.0	21.0	38.0	35.0	93.5
HUP240-20	21.0	26.0	21.0	38.0	35.0	93.5
HUP300-12	13.0	29.5	23.5	43.0	44.0	111.0
HUP300-14	15.0	29.5	23.5	43.0	44.0	111.0
HUP300-16	17.0	29.5	23.5	43.0	44.0	111.0
HUP300-20	21.0	29.5	23.5	43.0	44.0	111.0
HUP400-12	13.0	34.0	27.0	49.5	44.0	114.0
HUP400-14	15.0	34.0	27.0	49.5	44.0	114.0
HUP400-16	17.0	34.0	27.0	49.5	44.0	114.0
HUP400-20	21.0	34.0	27.0	49.5	44.0	114.0
HUP500-16	17.0	42.0	31.0	59.0	70.0	150.0
HUP500-20	21.0	42.0	31.0	59.0	70.0	150.0
HUP630-16	17.0	44.0	34.5	63.5	80.0	170.0
HUP630-20	21.0	44.0	34.5	63.5	80.0	170.0